

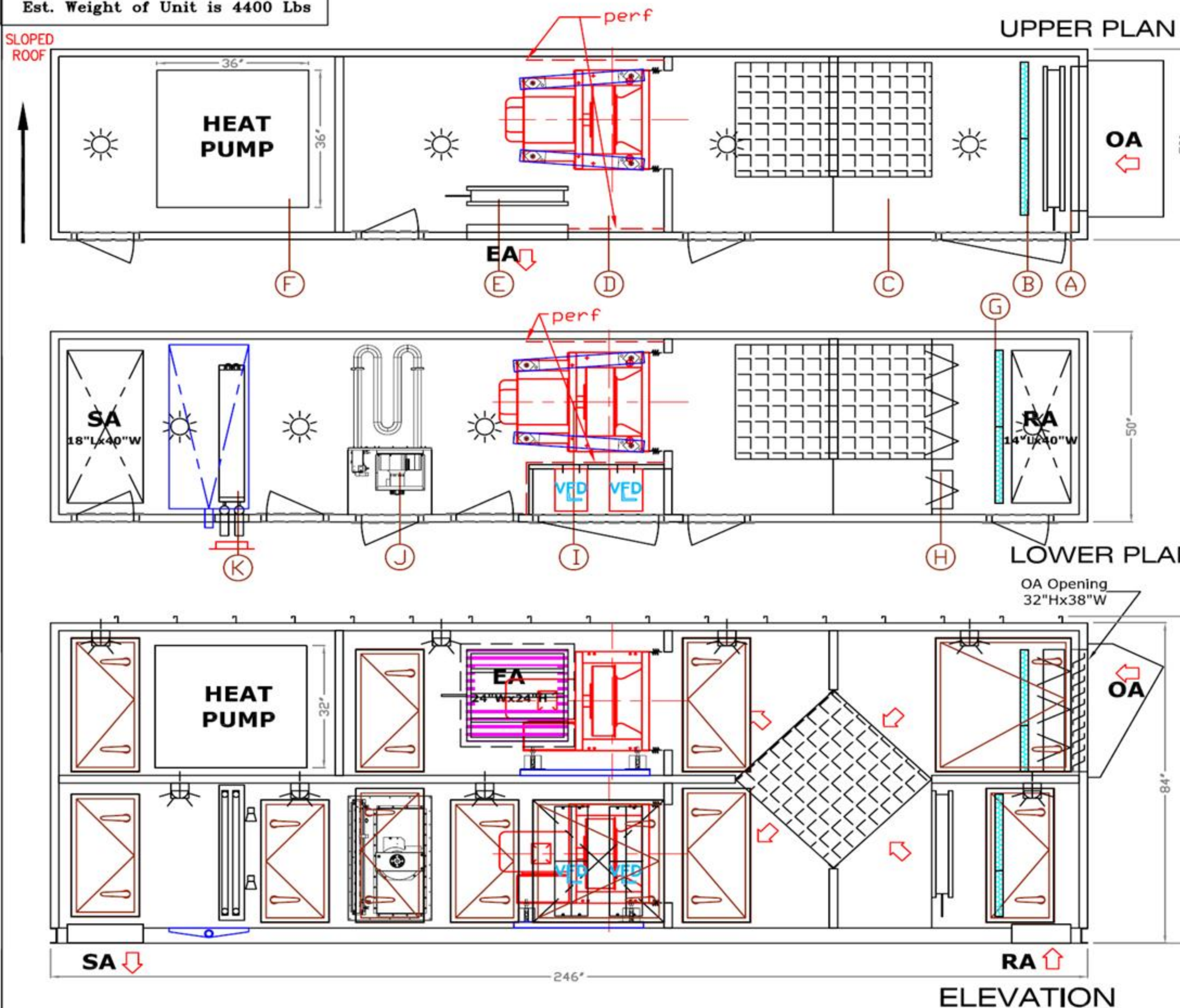
**PLATE HEAT RECOVERY UNIT WITH INTEGRATED  
 CUSTOM HEAT PUMP PACKAGE**

PROJECT	CLIENT	REPRESENTATIVE	DATE SHIPPED
Spanaway Lake High School HRU-1: 3,440 cfm HRU-2: 3,440 cfm	Bethel School District Spanaway, WA	Mechanical Sales Seattle, WA	January 29 2010



**SUBMITTAL DRAWING**  
**HRU-1 460V/3Ph/60Hz**  
 Est. Weight of Unit is 4400 Lbs

OUTER CASING	16G SOLID SATIN COAT - PAINTED	BASE	C4 CHANNEL - EPOXY PAINTED	PANEL	2" THICK, 3.0 lbs/ft INSULATION
INNER CASING	20G SOLID G90 GALVANIZED	UNDERSIDE FLOOR	20G SOLID GALVANIZED	FLOOR	1/8" CHECKER PLATE - PAINTED



(A)	OA DAMPER AND LOUVER WITH OA HOOD
(B)	2" 30/30 FILTER(30%)
(C)	HEAT PLATE EXCHANGER
(D)	RETURN FAN
(E)	EA Damper & Louver
(F)	HEAT PUMP
(G)	2" 30/30 FILTER(30%)
(H)	FACE & BYPASS DAMPER
(I)	SUPPLY FAN
(J)	INDIRECT GAS FIRED HEATER
(K)	DX COIL

- Notes:**
1. Single Point Power Connection
  2. Access Door Size as Permitted by Construction

Not Provided;  
 DDC Controls, No Viewing Window for Access Door, Testing, Site Work and Balancing.

Legend	
	VFD
	Magnahelic Gage
	Removable Panel

DOORS OPENING:	
P/L	3 PCS 16"W x 32"H x 2"T
P/R	1 PC 16"W x 32"H x 2"T
N/L	2 PCS 16"W x 35"H x 2"T
N/R	3 PCS 16"W x 35"H x 2"T
N/L	1 PC 32"W x 35"H x 2"T
N/L	1 PC 31"W x 32"H x 2"T

PROJECT	SPANAWAY LAKE HIGH SCHOOL	CAPACITY	3,440 CFM @ 2.70" TSP	HRU-1	DRWG.#	2047-SLH
---------	---------------------------	----------	-----------------------	-------	--------	----------